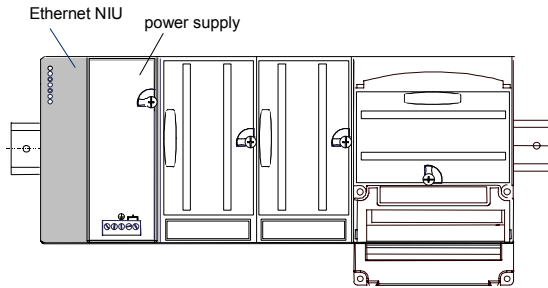


VersaMax® Ethernet Network Interface Unit

May 2007

GFK-1859G

The Ethernet Network Interface Unit (ENIU) is an Ethernet slave module that acts as controller for a set of I/O modules. Power for module operation is provided by a power supply that installs directly on the NIU



Specifications

Ethernet IP address	Any Valid IP Address Default is 195.0.0.x, where x is selected on the rotary switches.
Ethernet network data rate	10Base-T or 100Base-TX, auto-negotiated
I/O data	1024 bytes maximum. Up to 512 bytes of inputs or 512 bytes of outputs.
Fault data	128 bytes maximum
LEDs (5)	Power LED indicates presence of input power OK LED indicates health of the ENIU Faults LED indicates presence of faults LAN LED indicates health of Ethernet network Stat LED solid green indicates Modbus connection present or receipt of EGD exchanges; flashing Amber indicates invalid IP address
Number of I/O modules	Release 1.0 supports 8 I/O modules and no expansion racks Release 1.1 and later releases support 64 I/O modules and 7 expansion racks.
Power Consumption	+5V@175mA, +3.3V@425mA

Product Description

Revision:	EG
Firmware version:	1.32
Firmware upgrades:	82A1043-PM01-A1

Preinstallation Check

Carefully inspect all shipping containers for damage. If any equipment is damaged, notify the delivery service immediately. Save the damaged shipping container for inspection by the delivery service. After unpacking the equipment, record all serial numbers. Save the shipping containers and packing material in case it is necessary to transport or ship any part of the system.

Upgrading Previous Firmware Versions

Version 1.32 firmware replaces all previous versions. The Ethernet Network Interface Unit (ENIU) firmware resides in FLASH memory. This firmware may be upgraded via a download from an appropriate personal computer connected to the Ethernet connector (RJ-45) on the ENIU. The download uses an FTP session to the ENIU.

Compatibility

- **Protocols: Modbus Ethernet, Class 0 & 1:** all releases
- **Ethernet Global Data:** Release 1.1 and later releases
- **High density analog modules:** Release 1.1 and later
- **Hot Insertion for I/O modules:** Release 1.1 and later
- **Intelligent I/O module indirect firmware upgrades** using the serial TAN connector: firmware version 1.30 and later.

Product Revision History

Rev	Date	Description
IC200EBI001-EG BXIOEIU001-EG	October 2008	Updated Power Supply OK signal circuitry.
IC200EBI001-DG BXIOEIU001-DG	May 2007	Firmware version 1.32
IC200EBI001-DF BXIOEIU001-DF	December 2006	Firmware version 1.31
IC200EBI001-DE BXIOEIU001-DE	September 2004	Firmware version 1.30
IC200EBI001-CD BXIOEIU001-CD	April 2004	Changed to V0 plastic for module housing.
IC200EBI001-BD BXIOEIU001-BD	January 2004	ATEX approval
IC200EBI001-AD BXIOEIU001-AD	January 2002	Firmware version 1.21
IC200EBI001-AC BXIOEIU001-AC	September 2001	Firmware version 1.20
IC200EBI001-AB BXIOEIU001-AB	June 2001	Firmware version 1.10
IC200EBI001-AA BXIOEIU001-AA	December 2000	Initial product release

Fixed for Version 1.32

Configuring the module with its Gateway IP address in a different subnet than its ENIU IP (address based on default IP Class masks) will not prevent communications or cause the Fault and Stat LEDs to flash.

Operating Notes

- The Ethernet NIU assigns references in the EGD datagrams according to the physical order of I/O modules in the backplane. The downloaded hardware configuration is not used to assign I/O to EGD datagrams. (If a hardware configuration containing I/O addresses in a different order than the physical module locations is downloaded to the ENIU, the references are assigned to EGD datagrams based on the physical module location and not the downloaded configuration.)
- The VersaMax power supply connected to the Ethernet NIU and any power supplies that reside in a booster carrier must share the same external power source.
- After a point fault occurs on an IC200MDL730A discrete input module, two clear fault table commands must be sent to the VersaMax ENIU to clear the fault table and turn the Fault LED off. This issue does not occur when using IC200MDL730B and later I/O module hardware.
- Documentation note: The warning regarding hold last state operation on Page 1-7 of the **VersaMax System Ethernet Network Interface Unit User's Manual** (GFK-1860A) should read: **WARNING:** "For both discrete and analog Output or Mixed modules, if the ENIU loses power but the Output or Mixed modules do not lose power, the Hold Last State parameter does not work as might be expected. Upon ENIU power loss, outputs configured for Hold Last State go to the Last State value on modules that still have power. When power is restored to the

VersaMax® Ethernet Network Interface Unit

May 2007

GFK-1859G

ENIU, outputs go to **zero**. When communications are reestablished and the ENIU receives a Write message, outputs go to the values in the ENIU's Output Table."

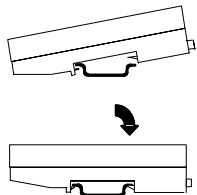
This warning applies to both Modbus and EGD operation. The current user's manual revision indicates it applies only to Modbus.

Open Issues

- On rare occasions, a verify or clear operation from the programmer will fail. The programmer may display the message "Online operation not supported on current target. Cannot continue current operation." Retry the verify or clear operation to resolve this issue. Occasionally, two retries are needed.
- If the Ethernet NIU is connected to an Ethernet hub, excessive multiple collisions may cause Ethernet communication to stop and restart. Replacing the Ethernet hub with a switch resolves the issue.
- If the IC200ALG240 Analog Input module generates a large number (approximately 10 or more) faults at the same time, not all of the faults are reported in the Ethernet NIU's fault table. There is no notification that some of the faults are lost. This only occurs when the faults are generated in close proximity to each other. For example, an ALG240 configured for 4-20mA current mode will generate three faults per point if all of the inputs are left open. (Open Wire, Low Alarm, and Out of Range) Only seven to ten of the faults generated are reported in the ENIU fault table.
- The Ethernet NIU does not re-report unresolved Loss of Module faults after its fault table is cleared. (If the loss of module condition still exists after the ENIU's fault table is cleared, the fault is not re-reported.) For example: When an I/O module is hot-extracted from the backplane, a Loss of I/O Module fault is recorded in the ENIU's fault table. If the fault table is cleared, the Loss of I/O Module fault is not re-recorded even though the I/O module is still missing from the backplane.

Quick Start Guide

1. **Install the NIU on the DIN Rail** by simply clicking it into place.

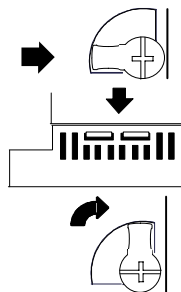


Note: The NIU and connecting carriers must be installed on the same section of 35mm x 7.5mm DIN rail.

The DIN rail must have a conductive (unpainted) finish for proper grounding.

(Refer to the heading **Module Installation** for information about space requirements or module orientation, or if you are installing the NIU in an area of excessive vibration).

2. **Install the Power Supply on the NIU.**



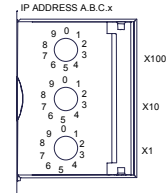
The latch on the power supply must be in the unlocked position.

Align the connectors and the latch post and press the power supply module down until the two tabs on the bottom of the power supply click into place.

Turn the latch to the locked position to secure the power supply to the top of the NIU.

Complete the power supply wiring as described in the installation instructions provided with the Power Supply.

3. **Set the IP Address - Adjust the rotary switches** on the front of the NIU using a 2.44mm (3/32in) flat screwdriver. These switches, marked IP Address A.B.C.x / X100, X10 and X1, select the hundreds, tens, and ones digits of the last field in the Ethernet IP address. The first three fields in the IP address, A.B.C., are fixed to 195.0.0. when the unit is shipped from the factory. For the last field, select any valid address in the range 1-254. Always cycle power to the NIU after changing the switch settings.



4. **Alternate Method to set Temporary IP Address using Telnet**

NOTE: This step is an alternate to Step 3 above. The address set with this method is temporary. It is lost if power is cycled.

- a. The ENIU and the personal computer must be operational and interconnected via an Ethernet connection. At the computer's DOS command prompt, type in the following, then press the Enter key:

arp -s (IP address you want to assign to ENIU) (MAC address of the ENIU) (IP address of your computer)

For example: **arp -s 3.16.27.5 08-00-19-01-48-64 3.16.88.139**

NOTE: You will not see any reply on the screen.

- b. To verify that the ARP table entry was accepted, type the following at the command prompt, then press the Enter key:

arp -a

An entry matching the desired ENIU IP address ("Internet Address") and MAC address ("Physical Address") should be seen in the ARP table, with the "Type" listed as 'static.'

ARP Table Entry Example

Internet Address	Physical Address	Type
3.16.27.5	08-00-19-01-48-64	static

- c. Next, create a Telnet connection to the ENIU (Port 1) by typing in the following command at the computer's MS-DOS prompt, then pressing the Enter key:

telnet (IP Address) 1

For example: **telnet 3.16.27.5 1**

A Telnet window will appear. After several seconds, a "Connect Failed!" dialog box will appear; regardless, the ENIU will change its IP address to the one designated in the Telnet command. (NOTE: If it takes more than 15 seconds for the Connect Failed! box to appear, the Telnet command probably didn't work.)

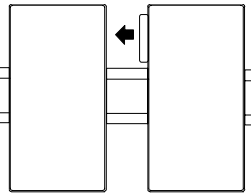
NOTE: Step 4 sets a temporary IP address that will be lost if power is cycled. To set a permanent (non-volatile) address, use the programmer software and "store" a configuration containing the correct IP address. NOTE: A device will need to be configured in the communications setup for the temporary IP address to allow you to perform the configuration store.

VersaMax® Ethernet Network Interface Unit

May 2007

GFK-1859G

5. **Connect the communications bus** to the connector on the front of the ENIU. (Refer to the heading **Bus Installation Guidelines** for detailed bus installation instructions.)
6. **Remove the connector cover on the right-hand side of the ENIU.** Do not discard this cover; you will need to install it on the last carrier. It protects the connector pins from damage and ESD during handling and use. Do not remove the connector cover on the left-hand side.
7. **Install additional modules.** Mount a module on its carrier and slide it to the left along the DIN-rail to fully engage the connector on the adjacent carrier or ENIU. Repeat for other modules, and install the connector cover (see Step 6) on the last carrier.



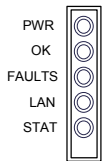
8. **Configuration.** A configuration can be stored by programming software, or the ENIU can be autoconfigured. When power is applied to the ENIU for the very first time, the ENIU will autoconfigure the modules physically present in the I/O station, starting at Slot 1. Autoconfiguration stops at the first empty slot or faulted module. If the autoconfiguration is unsuccessful or a new autoconfiguration is required, it is necessary to first clear the existing configuration from the ENIU. This is done by powering down the ENIU, disconnecting the ENIU from the first I/O carrier, and powering up the ENIU.

Note: If the I/O station includes any additional power supplies, those power supplies must be turned on either before the ENIU Power Supply or at the same time to assure accurate autoconfiguration.

9. **Power up the NIU.** The modules in the I/O station will automatically be configured, starting at slot 1 in each rack including expansion racks. If an empty slot or faulted module is encountered, autoconfiguration for that rack stops. Autoconfiguration then skips to the next rack and continues until all racks are configured.

Note: If the I/O station includes any additional power supplies, those power supplies should be turned on at the same time.

10. **Observe the Module LEDs.** The LEDs indicate the presence of power and show the operating mode and status of the NIU.



PWR Green indicates power is applied to the ENIU.

OK Green indicates the ENIU firmware is operational.

FAULTS Amber indicates the ENIU has detected a fault with itself or an I/O module. Blinking amber indicates a Fatal Fault

with the ENIU.

LAN Green (solid or blinking) indicates network packets are being received or transmitted. Indicates received data addressed to ENIU as well as broadcast data.

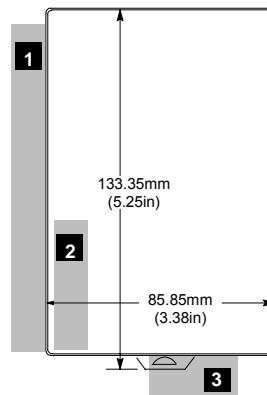
STAT - Modbus Mode. Solid Green indicates a Modbus connection. Amber blinking at 1/sec rate indicates an IP address problem.

STAT - EGD Mode. Solid Green indicates exchanges are being received. Amber blinking at 1/sec rate indicates an IP address problem

Installation in Hazardous Locations

- EQUIPMENT LABELED WITH REFERENCE TO CLASS I, GROUPS A, B, C & D, DIV. 2 HAZARDOUS LOCATIONS IS SUITABLE FOR USE IN CLASS I, DIVISION 2, GROUPS A, B, C, D OR NON-HAZARDOUS LOCATIONS ONLY
- WARNING - EXPLOSION HAZARD - SUBSTITUTION OF COMPONENTS MAY IMPAIR SUITABILITY FOR CLASS I, DIVISION 2;
- WARNING - EXPLOSION HAZARD - WHEN IN HAZARDOUS LOCATIONS, TURN OFF POWER BEFORE REPLACING OR WIRING MODULES; AND
- WARNING - EXPLOSION HAZARD - DO NOT DISCONNECT EQUIPMENT UNLESS POWER HAS BEEN SWITCHED OFF OR THE AREA IS KNOWN TO BE NONHAZARDOUS.

General Module Installation Instructions



Modules must be mounted on a horizontal DIN rail.

1. Allow sufficient finger clearance for opening NIU door.
2. Allow adequate clearance for serial port cables.
3. Allow adequate space for power wiring.

The NIU with power supply attached fits into a 70mm deep enclosure.

Rated thermal specifications are based on a clearance of 5.1cm (2in) above and below the equipment and 2.54cm (1in) to the left of the NIU module.

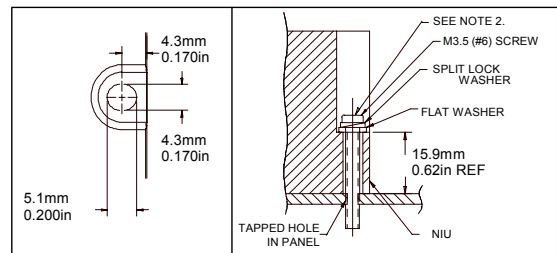
Panel-Mounting

For best stability, the DIN rail should be installed on a panel using screws spaced approximately 5.24cm (6in) apart.

If excessive vibration is a factor the NIU should also be screwed down to the mounting panel.

Note 1. Tolerances are +/- 0.13mm (0.005in) non-cumulative.

Note 2. 1.1-1.4Nm (10-12 in/lbs) of torque should be applied to M3.5 (#6-32) steel screw threaded into material containing internal threads and having a minimum thickness of 2.4mm (0.093in).



Removing the NIU from the DIN Rail

1. Turn off power to the power supply.
2. (If the NIU is attached to the panel with a screw) remove the power supply module. Remove the panel-mount screw.
3. Slide the NIU away from the other modules until the connector on the right side disengages from the next carrier.
4. With a small flathead screwdriver, pull the DIN rail latch out while tilting the other end of the NIU down to disengage it from the DIN rail.

VersaMax® Ethernet Network Interface Unit

May 2007

GFK-1859G

Bus Installation Guidelines

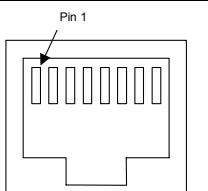
The proper cable for an Ethernet 10Base-T/100Base-TX network is a four twisted-pair, Category 5 Ethernet cable. The following table summarizes key characteristics of the Ethernet network and cable.

Network Topology	Point-to point Ethernet 10Base-T/100Base-TX connections with no termination. "Points" can be hubs or switches. If only 2 nodes are present, a crossover cable should be used to connect them.
Point-to point distance	Maximum of 100 meters.
Medium	Four twisted-pair unshielded cable. Shielding is permissible, but not required.
Transmission Speed	10 Mbit/s (10Base-T) or 100 Mbit/s (100Base-TX)
Connector	RJ-45
Cable Type	Category 5 ("Cat 5")
Termination	No termination required

Bus Connector

RJ-45 Connector Pin Assignment

Pin	Signal	I/O	Description
1	Tx+	O	+ Transmit output
2	Tx-	O	- Transmit output
3	Rx+	I	+ Receive input
4	FGND	-	Frame Ground
5	FGND	-	Frame Ground
6	Rx-	I	- Receive Input
7	FGND	-	Frame Ground
8	FGND	-	Frame Ground



ENIU Connector Front View

Ethernet MAC Address

The Ethernet NIU's MAC (physical) address is on the label on the front of the module.